



Naturactis Naturall+

ALL PROFILES
ARE FOUND IN NATURE

LYRAETK
DIGITAL DENTAL PROTOCOLS
Simple . Safe . Accessible

Naturactis Naturall+

ACTIVE IMPLANTS BY NATURE

Naturactis and Naturall+ implants, with their tapered shape, are particularly well suited to small mesodistal spaces, post-extraction surgery thanks to their excellent primary stability and aesthetic management in the anterior region, with the possibility of optimising implantation and immediate or delayed loading. These implants are designed to be inserted in 2 surgical steps. The immediate placement of a healing abutment will nevertheless allow to work in 1 stage.

Naturactis and Naturall+ are designed for the treatment of partial or complete edentulism in both the maxilla and mandible. They can be implanted in many cases.



POST-
EXTRACTION SURGERY
Naturactis

APICAL
SPACE REDUCED
Naturall+

...TO ADAPT TO EXTRACTION SITES ... AND TO THE SUB-SINUS SECTOR

Naturactis

Naturactis is particularly recommended for post-extraction surgery or for sites with low bone density. Naturactis implants are placed in a subcrestal position, allowing the best possible aesthetic restoration with adapted management of the biological space.



CYLINDROCONICAL IMPLANT IN POST-EXTRACTION SURGERY

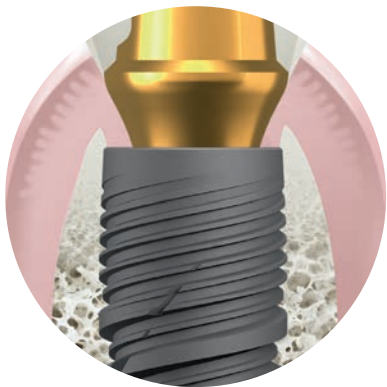
SUBCRESTAL LEVEL

Sandblasting of the shoulder for bone coverage.

DEEP-BLADED APEX

Departure from the end of the screw threads in the form of a strip.

- Better control of the desired insertion axis.
- Ideal for post-extraction situations.



SINGLE CONNECTION AND COMMON PROSTHETIC RANGE

A single connection for all implant diameters

The choice of the prosthetic platform is not conditioned by the choice of implant diameter

Great flexibility for shaping the prosthetic cradle

DOUBLE THREAD

Reduced bone heat-up and insertion time.

CENTRAL PROTRUSION BETWEEN THE SCREW THREADS

Increases the surface in contact with bone tissues by 15%.

Facilitates osteogenesis.

ALSO AVAILABLE IN Ø3

For reduced mesodistal spaces.

Surgical kit dedicated to Ø3.



SYNCHRONOUS MICROTHREAD WITH THE MAIN THREAD

Insertion with no tearing of the cortical bone.

Stabilization of the cortical bone.

Optimization of the primary anchorage.

ASYMMETRICAL THREAD

Homogeneous distribution of masticatory forces.

Excellent primary stability right from the placement of the implant.



← Ø3 →

← Ø3 →

← Ø1.5 →

← Ø2.2 →

← Ø3 →

← Ø3 →

← Ø1.5 →

← Ø2.2 →

← Ø3 →

← Ø3 →

← Ø1.5 →

← Ø2.2 →

← Ø3 →

← Ø3 →

← Ø1.5 →

← Ø2.2 →

Naturall+

Naturall+ is particularly suitable for sites with either low bone density or reduced apical space. Post-extraction surgery is also possible. Naturall+ implants are positioned juxtacrestally.



CONICAL IMPLANT IN ALL BONE DENSITIES

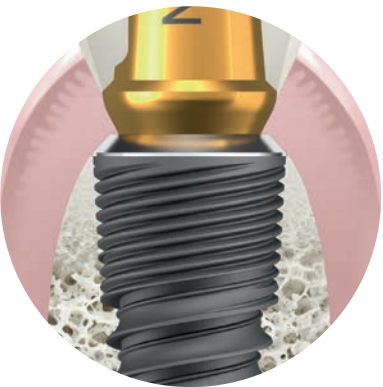
JUXTACRESTAL PLACEMENT

Better visibility and accessibility with the probe.

ENGAGING AND ATRAUMATIC APEX

Departure of the screw threads from the apex for high self-tapping capacity of the implant

Safe use in the sub-sinus area



THE SIMPLICITY OF A SINGLE KIT FOR TWO IMPLANTS

This kit contains all the instruments needed to carry out the surgical protocol and manage all bone densities for all lengths and diameters of Naturactis and Naturall+ implants.

DIFFERENTIATED PROTOCOLS

By bone density and implant diameter to obtain calibration of the implant sockets to ensure:

- > Good primary implant stability, which is essential for osseointegration.
- > Minimum heat build-up to avoid irreversible bone necrosis.

UNIQUE SURGICAL KIT

- > Guided protocols
- > Numbered drills
- > Illustration of instruments
- > Color codes for diameters
- > Graduated ruler

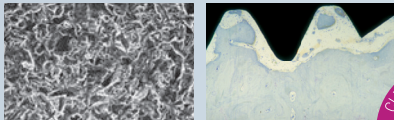


OUR RELIABLE AND PROVEN MANUFACTURING PROCESSES

PRECISE, LEAK-PROOF TAPERED CONNECTION

CERTIFIED SURFACE QUALITY

- > Microsandblasting with titanium oxide.
- > Nitric and hydrofluoric acid etching.



- > Internal hexagonal conical connection.
- > A single prosthetic connection common to all implant diameters.

BIBLIOGRAPHICAL REFERENCES



OUR QUALITY COMMITMENT



- 100% made in France implants
- Implants with lifetime guarantee
- Prosthetic parts guaranteed for 10 years



LYRA.ETK
DIGITAL DENTAL PROTOCOLS

Simple . Safe . Accessible

LYRA ETK - 726 rue du Général de Gaulle - 74700 Sallanches - France

Service clients France : T. +33 (0)1 76 42 00 60 | International Customer Service: T. +33 (0)1 76 36 14 04
sales@lyraetk.com | www.lyraetk.com